

LV JUICE

**NEW
PRODUCT**

Adjustable, Scaleable Power When & Where You Want It



Connect and power all of your gadgets and appliances whenever you want, wherever you want. This innovative power track allows anyone to simply and safely add, remove or reposition power and data sockets wherever and whenever they are needed along its length. The Mainline system can be seamlessly installed into walls, skirting boards or trunking systems in a fraction of the time it takes to install conventional fixed sockets.

FEATURES

- Suitable for new constructions, renovations & refurbishment projects
- Can be installed as part of a ring, radial or spur
- Restricted access to copper busbar from small objects & fingers
- Not limited by number of sockets
- Up to 32 amp capacity
- Moveable data networking socket
- Range of finishing options available
- Terminal Block connects existing live, neutral & earth wires to the track itself
- 2 metre lengths can be cut to fit space

Mainline
Moveable
Power &
Data

1

Insert socket into the track

2

Turn socket 90° to safely access power

3

Move or add more sockets as required



This Month

**DURASEAL
HEATSHRINKABLE
CONNECTORS**

PAGE 2

**METREL MULTIMETER
COMBO KIT**

PAGE 6

NEED CUSTOM LABELS?

PAGE 8

100% NEW

**FREE TRANSNET
BEANIE**

WHILE STOCKS LAST

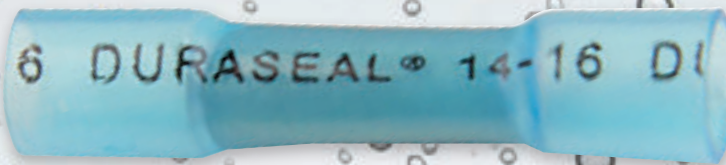
When you spend
over \$300 (excl
GST) on one
invoice this month





ENVIRONMENTALLY SEALED HEATSHRINKABLE CRIMP CONNECTORS

DURASEAL



FEATURES

- Perfect for Automotive and Marine applications
- Adhesive lining enhances protective qualities
- Completely environmentally sealed
- Protects against vibration
- Fully insulates the connection
- UL, CUL and Lloyds listed
- #D4060001 - 0.38-0.95mm²
- #D4060002 - 1.2-2.5mm²
- #D4060003 - 3-6mm²

Raychem
connectivity



UTILUX BATTERY CLIPS

H811/2



Copper

FEATURES



Plastic handles

Steel Zinc Plated

All clips are supplied with a Copper cable lug, screw and nut

Supplied in equal quantities of positive & negative

H811 has Copper shunt between handles

Coloured plastic handles

Cat No.	Material	Max. AMPs	Jaw Opening
H811/2	2MM COPPER	200	38MM
H812/2	2MM STEEL ZINC PLATED	100	38MM



H812/2



CCG ADAPTOR RANGE

FEATURES

- Convert mismatching threads to the required thread
- Precision manufactured from high quality brass (electroless nickel plated) or stainless steel on request
- Ex d I/II MbGb, Exe I/IIC MbGb, Ex t IIIC Db IM2/II2GD
- Ingress Protection
 - Parallel: IP66/67/68 (2m cont.)
 - Tapered: IP65 (NPT)

CCG ADAPTORS



**RATED
PRODUCTS**

CCG POSI FIT IP68 JUNCTION BOXES

FEATURES

- High temperature resistance and anti-static properties
- DIN Rail mounting studs are provided for use with terminal blocks
- Raised domed lid facilitates connections to be made outside of the box
- Use with approved CCG cable glands & non-sparking terminals
- Dust and water tight to IP68 when fitted with CCG sealed cable glands
- Boxes can be buried for extended periods
- Made from impact, corrosion & UV resistant glass reinforced polyester compound
- Meets requirements of ANZEx 13.4127X
- Hazardous Area Classification ENEx: Zone 1, 2, 21 and 22 Ex e IIC DIP A21
- 4-blanking plugs included
- Boxes with see through polycarbonate "adapt-a-lids" available on request
- 4-way H-Boxes with parallel entries available on request
- Extensive range with multiple entry thread sizes



TN-1003 | TN-1009



iTunes
CCG iPhone App
Download Now



All Specials and Products featured in TRANSNET JUICE are available from all good electrical wholesalers.



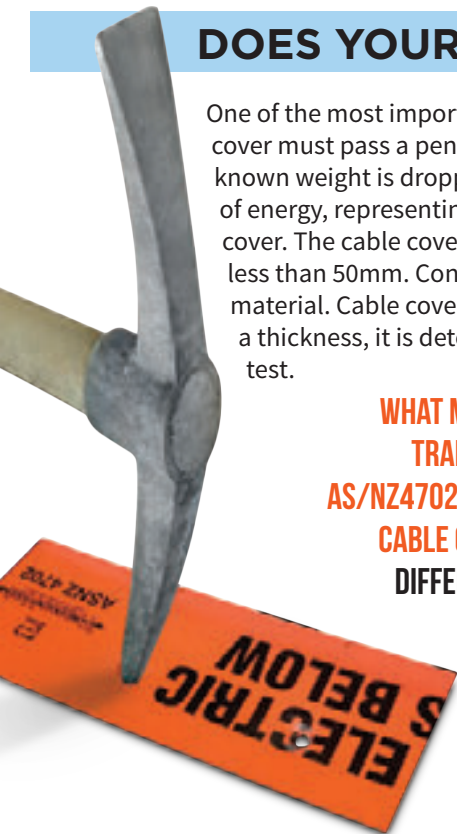


DOES YOUR CABLE COVER COMPLY?

One of the most important requirements of AS/NZ4702-2000 is that cable cover must pass a penetration test, where a specifically designed dart of known weight is dropped from a predetermined height through 125 joules of energy, representing potentially catastrophic damage to the cable cover. The cable cover passes the test only when the dart penetrates it by less than 50mm. Confusion is created with the reference to thickness of material. Cable cover to AS/NZ4702-2000 standard does not adhere to a thickness, it is determined by strength resulting from the penetration test.

WHAT MAKES TRANSNET AS/NZ4702-2000 CABLE COVER DIFFERENT?

- Custom widths up to 500mm available
- Top laminate shows manufacturer, supplier and applicable standard
- Every batch is tested throughout the manufacturing process
- Retains mechanical strength characteristics in extreme temperatures
- Gas and Electricity specific product available
- Available ex stock
- Thin & light
- Passes penetration test
- No contaminants
- Consistently strong throughout
- NZ made from recycled HDPE plastic



TransNet Cable Cover undergoing a penetration test

VIEW THE FULL RANGE ON OUR WEBSITE



ASTRON
breathing new life into plastics

TRANSNET MAINS ENTRY BOX 1, 2, & 3 PHASE

TRANSNET MAINS ENTRY BOX 1, 2 & 3 PHASE



#TNMEB1PH

81.5mm W x 206.50 H x 77mm D

#TNMEB2PH

146.5mm W x 246.50 H x 87mm D

#TNMEB3PH

146.5mm W x 246.50 H x 87mm D

FEATURES

- Made of UV stable plastic that won't shatter
- Shear bolt connectors for perfect connection every time
- Safer – No bare live parts
- Main cable supported by gland in gland plate
- Gland plate perfect fit for conduit gland too
- Strip length clearly outlined on connector body
- Make off connectors outside enclosure, saves

time & effort

- Electrical test points and test point caps built into connector bolt for ease of testing
- Captive Stainless Steel cover screw
- Insulated bimetallic connectors will terminate AL/CU cables, 4mm²-35mm² range



All Specials and Products featured in TRANSNET JUICE are available from all good electrical wholesalers.





WHAT MAKES RAYCHEM THE INDUSTRY LEADER?

Raychem cable clamps have a patented design which optimises clamping force at both the attachment point, and the cable by securing each clamp half separately. Cables can be aligned and located in the bottom half of the clamp prior to the final tightening.

Clamps come complete with all fasteners, no chance of coming up short on the job. Available in single, double and trefoil configurations.

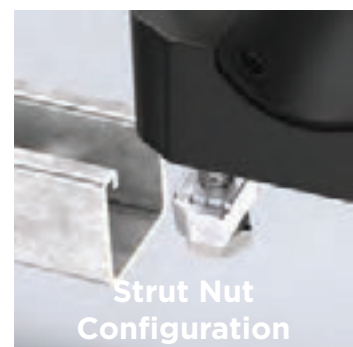
- Integral stainless steel clamping plates to ensure **consistent clamping pressure** on both sides
- **Range-taking** elastomeric inserts accept cable diameters from 26-106mm (more coming soon)
- Elastomeric inserts can accommodate **round, oval or “tri-round”** cable profiles
- **Impact resistant**, Halogen free, **self-extinguishing**, UV stabilised materials
- Available in a **strut nut configuration**
- Bottom half of clamps can be **mounted prior to cable fitment**
- Smooth aesthetics **improve overall strength** while in operation
- Part numbers & cable ranges moulded into top of clamp for **easy product identification**
- Captive elastomeric inserts for **increased cable protection** and containment
- Can be used as an **individual unit or stacked**
- Can be mounted using centre bolt or two bolts at extremities



SINGLE OR TREFOIL



- Stacked dual application
- Dual cable application
- 3 x 3 configuration
- Pyramid Installation
- 3 phase pad mount kit TAP10910 - 26-38mm Ø
- Double stacked trefoil application



Strut Nut Configuration

Designed & independently tested to meet all requirements of IEC61914

Raychem
from TE Connectivity





MI3309BT | HANDHELD | APPLIANCE | TESTER WITH BLUETOOTH

Lightweight design, pre-programmed and custom test sequences, optional QR / Barcoding, android keyboard application and RFID systems make the MI 3309BT an ideal instrument for high volume professional safety testing of portable appliances.

FEATURES

- Functional and visual inspection
- Earth bond resistance
- Insulation resistance of isolated accessible conductive parts
- Substitute leakage current of isolated accessible conductive parts
- Differential leakage current test
- Touch leakage test
- PRCD tests
- Power test
- IEC cord polarity test
- TRMS voltage meter
- Pre-programmed test sequences
- Test sequences can be uploaded from PC
- Autosequencing
- Dual powered
- PASS / FAIL
- Fixed appliance testing
- Leakage and load currents with (optional) current clamp
- Scan and test
- RCD testing
- Memory



#MI3309BT3PH | COMBO KIT

Includes #MI3309BT Handheld Appliance Tester with Bluetooth & #3PHASEADAP Three Phase Adaptor

This three phase adaptor is a suitable solution for testing both 4 and 5 pin & 10 - 32A 3 phase equipment (20amp & 32amp sockets). This unit will allow the portable appliance tester to conduct an Earth bond and Insulation Resistance test on the three phase device.

FEATURES

- 4 & 5 Pin
- 10 - 32A Testing
- 20amp & 32amp socket

*Does not perform Earth Leakage

\$1799.00
PLUS GST



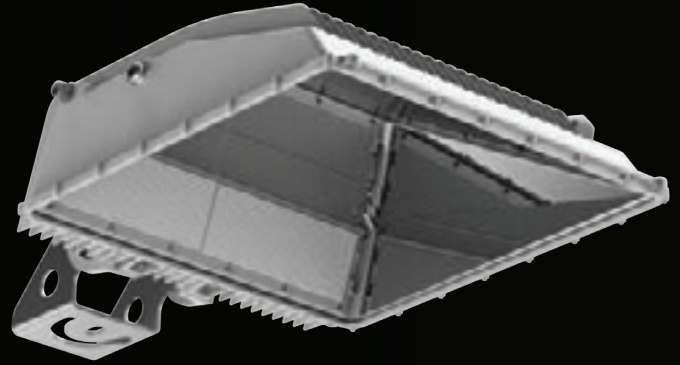
ASK US ABOUT PRINTER OPTIONS



MAHA

THE NEW STANDARD IN HIGH MASTS

Less light pollution into neighbouring properties



FEATURES

- UV free & better uniformity
- Long life over metal halide floods
- Less CO₂ and less maintenance
- Luminance improvement
- Big energy savings - 600w replaces 1.5kW metal halide
- Wireless ZigBee options and/or remote drivers
- 10 year warranty
- 20kV surge protection
- Outstanding 130lm/W luminous efficiency
- 150W up to 600W options
- Designed for 0° tilt

FEATURES

- Flicker free
- Options for wireless Zigbee control
- Remote driver options
- Beam angles & colour temperature options
- Tilttable and rotatable

• 105lm/W

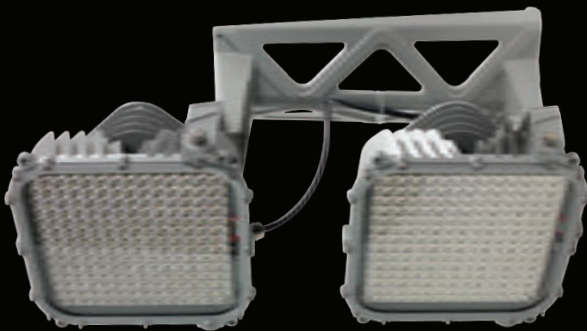
• 600W, 800W, 1kW, 1.2kW options

APPLICATIONS

- Sports Stadiums
- Indoor venues
- Ports

SPECIALIST SPORTS STADIUM LUMINAIRES SUFA

Designed for UHD broadcast quality



GigaTera[®] **e** ECO LIGHT
beyond light



MAKE YOUR MARK

Ask Us About Custom Labels



TransNet New Zealand Ltd

Auckland

78 Cryers Road
East Tamaki
Auckland
NEW ZEALAND
Ph 0800 442 182
Fax 0800 442 183
PO Box 39 383
Howick, Auckland

Wellington

18 Sydney Street
Petone
Wellington
NEW ZEALAND
Ph 04 576 2530
Fax 04 576 0040
PO Box 39 383
Howick, Auckland

NEW ZEALAND

sales@transnet.co.nz

TransNet Tonga

Ma'ufanga

Small Industries
Ma'ufanga
TONGA
Ph +67 627 939
Fax +67 627 976
PO Box 2932
Nukualofa

TONGA

transnet@kalianet.to



TransNet can supply a huge range of specialised labelling products to suit your needs. Contact us today to discuss your requirements and customisations.



TransNet NZ Ltd has made every reasonable effort to ensure the accuracy of this information and it is to the best of our knowledge correct and reliable. Under no circumstances does this constitute an assurance of any particular quality or performance and users should independently evaluate the suitability of products for their desired application. All information in this publication including pricing, drawings, illustrations, images and graphic designs are reflections of our current understanding. TransNet NZ Ltd reserves the right to make any adjustment to this information at any time. Our liability for the products outlined in this publication is set forth in our standard terms and conditions of trade. In case of any potential ambiguities or questions, please contact us for clarification.

